

RECOMMENDED WEDDING VENUES



GET MARRIED AT CHAUTAUQUA!

We would be honored to host your wedding at Chautauqua. Our quiet mountain setting is the perfect space for a small, intimate, heartfelt wedding. Founded in 1898 and named a National Historic Landmark in 2006, Chautauqua has held a special place in the hearts of the Boulder community for more than 100 years. It's the perfect place to celebrate one of the most important events of your life.

COMMUNITY HOUSE—THE GRAND ASSEMBLY

The Community House's largest room, the Grand Assembly Hall, is the crown jewel of Chautauqua. Built in 1917, it holds many years of happy memories! The room is all warm wood, surrounded by shelves of antique books, with a bay window at one side. The room has a gas fireplace and a baby grand piano. There's a wrap-around balcony inside and a covered porch outside overlooking a garden with a brick path. The space also includes a kitchen, buffet/dining area and a bridal changing room.

ROCKY MOUNTAIN CLIMBERS' CLUB

The completely renovated, historic Rocky Mountain Climbers' Club room is perfect for a small, elegant wedding or reception. This room has gorgeous all-around interior stone walls, and the gas fireplace provides a lovely, warm ambience.

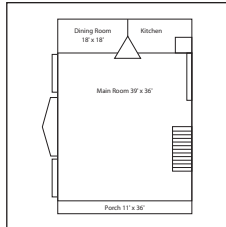
THE AUDITORIUM TERRACE

A lovely flagstone patio adjacent to the Auditorium, the Terrace is the perfect spot for a quiet, elegant outdoor ceremony. Reached by a short flight of stairs and overlooking a garden with a brick path, the Terrace has a stunning view of the Flatirons and is partially covered by a canopy during the summer months.

PLEASE NOTE: The Terrace cannot accommodate private events on dates when the Auditorium is in use. Terrace reservations for May through October cannot be booked until the summer Auditorium schedule is finalized, usually not until late April of each year.



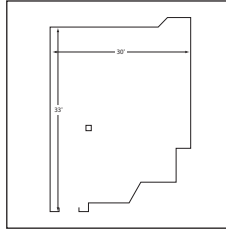
GRAND ASSEMBLY



CAPACITY

75 banquet
60 classroom
100 theater

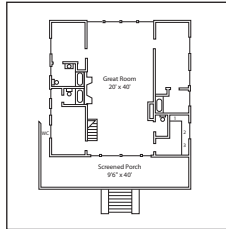
ROCKY MTN CLIMBERS' CLUB



CAPACITY

40 banquet
24 classroom
60 theater

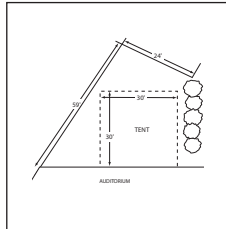
MISSIONS HOUSE LODGE



CAPACITY

30 banquet
50 theater

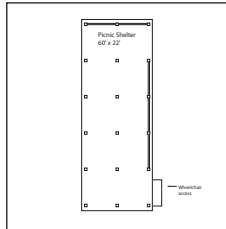
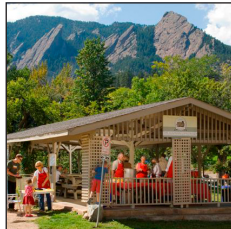
AUDITORIUM TERRACE



CAPACITY

50 banquet
75 theater

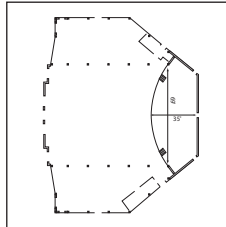
PICNIC SHELTER



CAPACITY

75

AUDITORIUM



CAPACITY

40 banquet
1300 auditorium seating



VENDOR RECOMMENDATIONS

We're happy to provide recommendations for caterers, florists, photographers and other vendors and help advise you on room setup, wedding logistics and other planning questions.

In addition to weddings, we host a variety of memorial services, reunions, banquets, anniversaries, bar/bat mitzvahs and holiday gatherings.